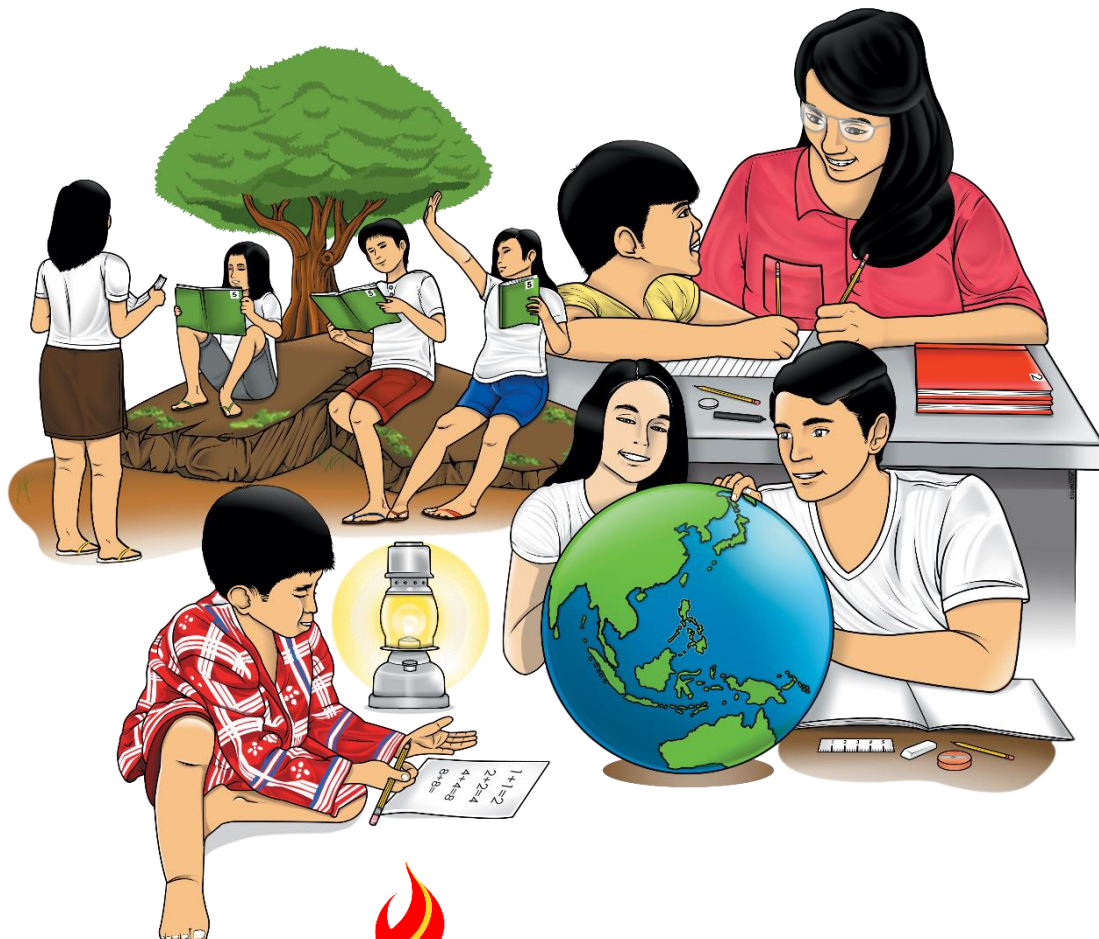


# Arts

## Quarter 1 – Module 7: Arts and Crafts of Luzon (Highland and Lowlands) Architectures



**Arts – Grade 7**  
**Alternative Delivery Mode**  
**Quarter 1 – Module 7: Creation of Arts and Crafts of Luzon**  
**(Highlands and Lowlands) Architectures**  
**First Edition, 2020**

**Republic Act 8293, section 176** states that: No copyright shall subsist in any work of the Government of the Philippines. However, prior approval of the government agency or office wherein the work is created shall be necessary for exploitation of such work for profit. Such agency or office may, among other things, impose as a condition the payment of royalties.

Borrowed materials (i.e., songs, stories, poems, pictures, photos, brand names, trademarks, etc.) included in this module are owned by their respective copyright holders. Every effort has been exerted to locate and seek permission to use these materials from their respective copyright owners. The publisher and authors do not represent nor claim ownership over them.

Published by the Department of Education  
Secretary: Leonor Magtolis Briones  
Undersecretary: Diosdado M. San Antonio

**Development Team of the Module**

<b>Author:</b>	Louie J. Cortez
<b>Content Editor:</b>	Emmanuel C. Alveyra
<b>Language Editors:</b>	Cherrie Rose L. Desaliza, Gladys F. Cantos
<b>Reviewer:</b>	Emmanuel C. Alveyra
<b>Illustrator:</b>	Reymark L. Miraples, Louie J. Cortez, Richard Amores, Pablo M. Nizal, Jr., Jan Christian D. Cabarrubias
<b>Layout Artist:</b>	Reymark L. Miraples
<b>Management Team:</b>	Benjamin D. Paragas, Mariflor B. Musa, Melbert S. Broqueza, Danilo C. Padilla, Annabelle M. Marmol, Florina L. Madrid, Norman F. Magsino, Dennis A. Bermoy, Emmanuel C. Alveyra

Printed in the Philippines by \_\_\_\_\_

**Department of Education – MIMAROPA Region**

Office Address: Meralco Avenue corner St. Paul Road, Pasig City  
Telephone Number: (02) 6314070  
E-mail Address: mimaropa.region@deped.gov.ph

# **Arts**

## **Quarter 1 – Module 7: Arts and Crafts of Luzon (Highland and Lowlands) Architectures**

# Introductory Message

For the facilitator:

The 7th module in Art 7 (Quarter 1) contains the detailed discussion about the architectures from Luzon. Said discussion focuses on the elements and principles of arts which can be observed on the designs. The facilitator needs to strengthen the learners' understanding about the elements and principles of arts. Analysis of those will help the learners to fully understand its value and appreciate the aesthetic qualities and uniqueness of the design present in the arts and crafts from Luzon. This module used the Blooms' Taxonomy Instructional Design which integrates the Bloom's Taxonomy Model of Learning in every part of the module. Performance task is included in the last part of the module to enhance the creativity of learners. This module will guide learners on how to create an architectural design of their own house. Please guide the learners in the different activities especially on the art activity that they have to accomplish. Remind the learners to use separate sheets in answering the pre-test, self-check exercises, and post-test.

For the learner:

The 7th module in Arts 7 (Quarter 1) will guide you to analyze the elements and principles of arts that can be observed in the architectural designs from Luzon. By looking into the designs, you could be able to identify the structures and the place where it originated. You have to recognize also the materials used that made those structures unique. This module will guide you to create your own architectural design which reflects your culture. Are you excited to create your own artwork? Try to accomplish all the challenging task.

This module has the following parts and corresponding icons:



***What I Need to Know***

This will give you an idea of the skills or competencies you are expected to learn in the module.



***What I Know***

This part includes an activity that aims to check what you already know about the lesson to take. If you get all the answers correct (100%), you may decide to skip this module.



***What's In***

This is a brief drill or review to help you link the current lesson with the previous one.



***What's New***

In this portion, the new lesson will be introduced to you in various ways such as a story, a song, a poem, a problem opener, an activity or a situation.



***What is It***

This section provides a brief discussion of the lesson. This aims to help you discover and understand new concepts and skills.



***What's More***

This comprises activities for independent practice to solidify your understanding and skills of the topic. You may check the answers to the exercises using the Answer Key at the end of the module.



***What I Have Learned***

This includes questions or blank sentence/paragraph to be filled in to process what you learned from the lesson.



***What I Can Do***

This section provides an activity which will help you transfer your new knowledge or skill into real life situations or concerns.



***Assessment***

This is a task which aims to evaluate your level of mastery in achieving the learning competency.



***Additional Activities***

In this portion, another activity will be given to you to enrich your knowledge or skill of the lesson learned. This also tends retention of learned concepts.



***Answer Key***

This contains answers to all activities in the module.

At the end of this module you will also find:

### **References**

This is a list of all sources used in developing this module.

The following are some reminders in using this module:

1. Use the module with care. Do not put unnecessary mark/s on any part of the module. Use a separate sheet of paper in answering the exercises.
2. Don't forget to answer *What I Know* before moving on to the other activities included in the module.
3. Read the instruction carefully before doing each task.
4. Observe honesty and integrity in doing the tasks and checking your answers.
5. Finish the task at hand before proceeding to the next.
6. Return this module to your teacher/facilitator once you are through with it.

If you encounter any difficulty in answering the tasks in this module, do not hesitate to consult your teacher or facilitator. Always bear in mind that you are not alone.

We hope that through this material, you will experience meaningful learning and gain deep understanding of the relevant competencies. You can do it!

## Lesson

# 1

## Creation of Arts and Crafts of Luzon (Highlands and Lowlands) Architectures

### Learning Competencies

The learner:

1. creates crafts that can be locally assembled with local materials, guided by local traditional techniques (e.g., habi, lilip, etc). (A7PR-Ic-e-1)
2. derives elements from traditions/history of a community for one's artwork (A7PR-If-2)
3. shows the relationship of the development of crafts in specific areas of the country, according to functionality, traditional specialized expertise, and availability of resources (e.g. pottery, weaving, jewelry, baskets) (A7PR-If-3)
4. shows the relationship of Luzon (highlands and lowlands) arts and crafts to Philippine culture, traditions, and history (Islamic influences, Spanish heritage, and American legacies in education, business, modernization, and entertainment, as well as in indigenous practices, fiestas, and religious and social practices) (A7PR-Ih-4)



### ***What I Need to Know***

How's your day? Do you feel fine? Would you like to travel to different places where you can enjoy your day? Be ready and put your seat belt on, let us look into the beautiful places in Luzon. In the previous module, you were given a chance to design and create your own pot and traditional tattoo. It helped you recognize the different materials and techniques in creating those arts.

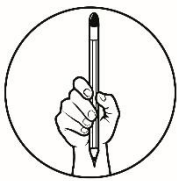
Luzon is the biggest among the three major islands in the Philippines. There are churches which serve as the symbols of Christianity that brought and still brings values in the community.

Meanwhile, houses in Luzon have its own characteristics, designs, and materials. The best architectures fit well in these houses. Broadly speaking, architecture is much more than that because each aspect of arts gives unique story and prominence. Artworks were artistically planned and crafted like buildings, dome, churches, and the like making each of them stand out from the rest. Would you like to wander around different churches or mind making an architectural design of your own house? Experience that first hand, here in our learning exploration that is about to begin. Let us experience the ambiance of the different places where these architectures of the highlands and lowlands of Luzon are placed.

## Learning Objectives

In this module, you will be able to:

- determine the different materials and techniques used in architectures from the highlands and lowlands of Luzon;
- make or draw Architectures using local materials and techniques;
- appreciate the architectures from the highlands and lowlands of Luzon by determining the proper use of elements and principles of arts and how it reflects its culture.



## ***What I Know***

A. Complete the following statements by supplying the right word/s from the box below. Write your answer on your answer sheet.

Calle Crisologo	Ivatans' Houses	Spanish Gate
Parish of the three Kings	San Andres Apostol Parish Church	Tumauini Church

- Old Spanish-type houses in \_\_\_\_\_ have huge, high-pitched roofs, large and rectangular living rooms that are made of adobe, bricks, lime, terracotta, hardwood floors, and capiz window panels.
- \_\_\_\_\_ is known for the use of coral stones instead of adobe.
- \_\_\_\_\_ walls are made of limestones with reed and cogon roofs.
- \_\_\_\_\_ has high walls made from locally-quarried stone.
- \_\_\_\_\_ is made from red bricks ornamented with carvings of flowers, leaves, scallops, saints, religious symbols and other fanciful motifs.



B. Read the following statements in column A and match it with column B. Write the letter of the best answer.

<b>A</b>	<b>B</b>
6. In Batanes Group of Islands, these materials are chosen because they are strong enough to withstand the numerous typhoons and earthquakes that hit the group of Islands because of its geographic location.	A. Spanish Gate
7. San Andres Apostol Parish belfry is composed of _____ topped by a lantern and a cross.	B. Capiz
8. It was used as prison facility, entrance and exit gate to the naval station during the Spanish and American occupations.	C. Huge wedding cake
9. Calle Crisologo in Vigan, Ilocos Sur is narrow and _____ street touches from the Spanish colonial architecture	D. Pattern
10.The cylindrical belfry of Tumauni Church looks like a _____ because of its design motifs like laces, hearts and beads.	E. Symmetrical
11.This principle of arts can be observed in the street of Calle Crisologo	F. Limestones, reed and cogon
12.This Material is used in the windows of the houses in Vigan	G. Cobbled-stoned
13.This is a kind of balance observed in the Spanish Gate.	H. Circular columns
14.This is a common form of the belfry of Tumauni Church and San Andres Apostolic Parish.	I. Geographic location/surroundings
15.One factor in choosing the right materials of the architecture is _____.	J. Cylindrical/ cylinder
	K. Square



## ***What's New***

Do you recognize the following pictures?

There are jumbled letters inside each box. Re-arrange the letters to form a word that will name the picture opposite to it. This will unlock the pictures to be able to reach your destination. Write your answer on a separate sheet.



1. Are you familiar with the materials illustrated above? What made you identify them easily?
2. Where can you find those materials?
3. What structures can be made with those materials?

The previous activity guided you to look closely in the materials used in the different architectures such as houses, churches, and other historical landmarks in Highlands and Lowlands of Luzon. In the next parts of the module, you will discover how these materials have something to do with the cultural and geographical background of the place and how it can be localized to modify its distinct characteristics. Let us also discover their techniques in creating their architecture that fits in its surroundings.



## What is It

There are different kinds of materials which can be used in building a house but there are also things to consider especially the location where we will build it. Let's see the wonder of the architectures of highlands and lowlands of Luzon.

**Calle Crisologo** also called **The Heritage Village** in Vigan, Ilocos Sur is narrow and cobble-stoned street touches from Spanish colonial architecture.

Alongside of its streets are the old Spanish-type houses which have huge, high-pitched roofs, large and rectangular living rooms that are made of adobe, bricks, lime, terracotta, hardwood floors, and capiz window panels.<sup>1</sup> They used mortared bricks and stones for the first floor walls, while the second floors were made largely of timber.



*Calle Crisologo*

They believed that this kind of structure proved to weather earthquakes and storms better and can be seen in the preserved houses of Vigan.



*Ivatans' House*

**Ivatans' Houses** in Batanes Group of Islands have unique architectural forms. Walls are made of limestones with reed and cogon roofs. Their houses are commonly divided into two parts, the house proper and the storage area or the kitchen. The main house is made of lime and stones; it is the larger area. The kitchen or storage area is usually made of wood and thatch. The ceiling is significantly lowered around 1.60-2.00 meters high only and has smaller openings for door and window to preserve the temperature warm on its interiors.

The structure, design and materials are chosen because they are strong enough to withstand the numerous typhoons and earthquakes that hit the group of Islands because of its geographic location.<sup>2</sup>

<sup>1</sup> 1 Lourdes R. Siobal et.al, "Arts and Crafts of Luzon (Highlands and Lowlands)" in Music and Arts Learner's Material-Grade 7, (Department of Education ,2017), 146-147

<sup>2</sup> 2 Lourdes R. Siobal et.al, "Arts and Crafts of Luzon (Highlands and Lowlands)" in Music and Arts Learner's Material-Grade 7,



*Tumauni Church*

Another amazing architecture in Luzon is the San Matias Parish Church or commonly known as **Tumauni Church** in municipality of Tumauni, Isabela. It is an ultra- baroque church architecture and well- known for its extensive use of red bricks. It also ornamented with carvings of flowers, leaves, scallops, saints, religious symbols and other fanciful motifs.

The façade is flanked by two pseudo-Corinthian columns and niches, one located above the entrance and the two remaining larger niches on each side of the columns. The cylindrical belfry of the church looks like a huge wedding cake because of its design motifs like laces, hearts and beads.<sup>3</sup>

**Subic Spanish Gate** in Olongapo City, Zambales has high walls made from locally-quarried stone connected to the south gate that faced the waterfront. This also served as the West Gate of the arsenal and faced the Spanish-era settlement of Olongapo. It was used as prison facility, entrance and exit gate to the naval station during the Spanish and American occupations.<sup>4</sup>



*Subic Spanish Gate*



*San Andres Apostol Church*

The **San Andres Apostol Parish** in Masinloc, Zambales is known for the use of coral stones instead of adobe. The front of the church is divided into the triangular pediment: two horizontal sections and three vertical ones. Church façade is mostly a semi gothic style with Neo-classic structures. The saints' are placed on the first level, windows with rectangular shapes on the second, and decorative carved niche of the patron saint and geometric carving and medallions on the pediment.

The architrave was decorated with triglyphs between the pediment and the second level which gives a classical appearance to the church. The front of the church is divided into the triangular pediment: two horizontal sections and three vertical ones. Its belfry is composed of circular columns topped by a lantern and a cross.<sup>5</sup>



Directions: Describe the following pictures based on how the elements and principles of arts were used in the architectural designs. Explain how the elements and principles of arts reflect the functionality, tradition, expertise, and availability of resources.



Calle Crisologo



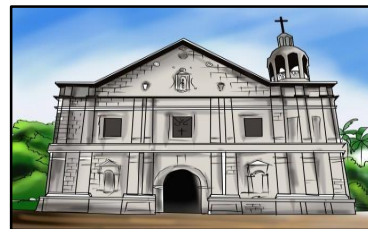
Ivatans' Houses



Tumauni Church



Spanish Gate



San Andres Apostol Parish

<b>Elements/ Principles</b>	<b>Calle Crisologo</b>	<b>Ivatans' Houses</b>	<b>Tumauni Church</b>	<b>Spanish Gate</b>	<b>San Andres Apostol Parish</b>
line					
shape					
space					
texture					
balance					
contrast					
emphasis					
Rhythm/ movement					
Proportion					

(Department of Education ,2017), 152-153

<sup>3</sup> Gaspar, Roger. "Flowers in Brick: The Tumauni Church in Isabela"PHILIPPINE COLONIAL CHURCH ARCHITECTURE(Philippine Real Estate Magazine, 1996). Accessed February 27,2020.

<https://web.archive.org/web/20090801045947/http://www2.hawaii.edu/~gaspar/tumaui.html>

<sup>4</sup> Empeno, Henry. "Subic's Spanish Gate declared a historical landmark". BusinessMirror December 2,2013. Accessed

February 25, 2020. [https://en.wikipedia.org/wiki/Subic\\_Spanish\\_gate](https://en.wikipedia.org/wiki/Subic_Spanish_gate)

<sup>5</sup> Galende, Pedro. Philippine Church Façades (1st ed.) . Manila, Philippines: San Agustin Museum (2007). p. 172.

Congratulations! You made it. After describing the elements and principles of art used, kindly answer the following questions on another sheet of paper.

1. What are the similarities and differences of the architectures based on the elements of art used?
2. To analyze it further, what are the similarities and differences of the architectures based on the principles of arts used?
3. How did the elements create distinctive architectural designs that describe the history and culture of people?



## ***What's More***

### **Activity 1**

In this activity, you will be able to enhance your illustration skills and creative imagination in making architectural designs. Let's start from planning your simple dream house. List down or label the materials which will be used in building your house. Identify also your preferred house location. Draw your design on a separate sheet of paper.

### **MY DREAM HOUSE**

A large, empty rectangular box with a thin black border, intended for a student to draw their architectural design.

1. What are the special characteristics of your design that makes it different from the other illustrations?
2. Based on your design, give at least three elements of arts used and explain its importance.

## Activity 2: I AM VENN!

Directions: The following are some of the famous architectures in Luzon with primitive designs. Your task for this activity is to choose two architectures, then compare and contrast them using the Venn Diagram based on the elements or principles they possess. Afterwards, discuss your answers to the following questions below. Do this task on your activity notebook?



Ivatans' Houses



Calle Crisologo



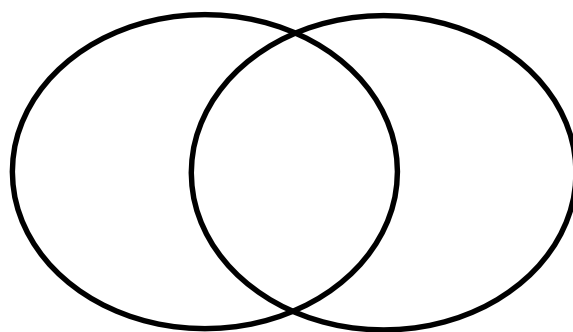
Tumauni Church



Spanish Gate



San Andres Apostol Parish



1. What make your chosen architectures unique from the other architectures? Why do you say so?
2. Are the elements presented in the architectures you have chosen have commonalities? What are these commonalities? Discuss briefly.

Congratulations! You made it. you really understood what this module is all about. You are getting closer to the end of this module. Keep doing great! Now, be expressive. Let your realizations be expressed by writing a reflection.



## ***What I Have Learned***

**My Reflections**

---

---

---

---

---

---



## ***Assessment***

- A. Complete the following statements by supplying the right word/s from the box below. Write your answer on your answer sheet.

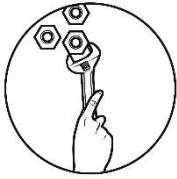
Calle Crisologo	Ivatans' Houses	Spanish Gate
Parish of the three Kings	San Andres Apostol Parish Church	Tumauini Church

1. Old Spanish-type houses in \_\_\_\_\_ have huge, high-pitched roofs, large and rectangular living rooms that are made of adobe, bricks, lime, terracotta, hardwood floors, and capiz window panels.
2. \_\_\_\_\_ is known for the use of coral stones instead of adobe.
3. \_\_\_\_\_ walls are made of limestones with reed and cogon roofs.
4. \_\_\_\_\_ has high walls made from locally-quarried stone.
5. \_\_\_\_\_ is made from red bricks ornamented with carvings of flowers, leaves, scallops, saints, religious symbols and other fanciful motifs.



B. Read the following statements in column A and match it with column B. Write the letter of the best answer.

<b>A</b>	<b>B</b>
6. In Batanes Group of Islands, these materials are chosen because they are strong enough to withstand the numerous typhoons and earthquakes that hit the group of Islands because of its geographic location.	A. Spanish Gate
7. San Andres Apostol Parish belfry is composed of _____ topped by a lantern and a cross.	B. Capiz
8. It was used as prison facility, entrance and exit gate to the naval station during the Spanish and American occupations.	C. Huge wedding cake
9. Calle Crisologo in Vigan, Ilocos Sur is narrow and _____ street touches from the Spanish colonial architecture	D. Pattern
10.The cylindrical belfry of Tumauni Church looks like a _____ because of its design motifs like laces, hearts and beads.	E. Symmetrical
11.This principle of arts can be observed in the street of Calle Crisologo	F. Limestones, reed and cogon
12.This Material is used in the windows of the houses in Vigan	G. Cobbled-stoned
13.This is a kind of balance observed in the Spanish Gate.	H. Circular columns
14.This is a common form of the belfry of Tumauni Church and San Andres Apostolic Parish.	I. Geographic location/surroundings
15.One factor in choosing the right materials of the architecture is _____.	J. Cylindrical/ cylinder
	K. Square



## ***What I Can Do***

In this activity you will use your creativity, imagination, and appreciation by creating/ constructing your own miniature. You may use different kinds of materials to make your miniature more durable through incorporating the designs, and forms of the highland and lowland object in your creation. The one below is an example of paper house. You may follow the steps given however you can still craft your own architectural forms (miniature cardboard house, mini vintage wooden house, churches, landmarks and other architectural forms).

Take a photo of your artwork and submit it to your facilitator through messenger, e-mail, or other media platforms.

Okay, let's start.

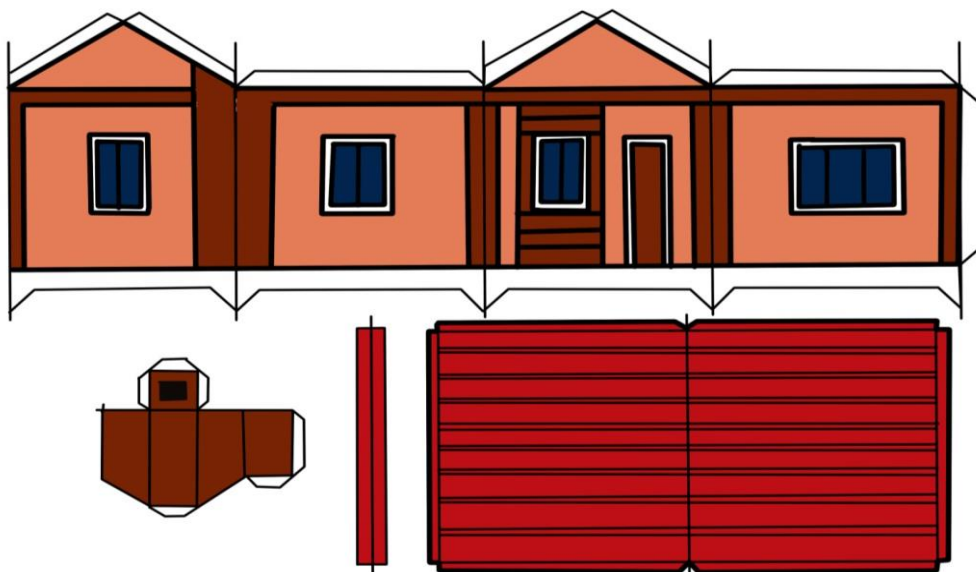
### **MY ARCHI-GOAL**

#### **Materials:**

- Pencil
- Printed materials
- Pen or marker
- Paper
- Glue
- Scissors
- Cutter
- Coloring materials
- Other materials for decorations



Note: You may use this picture as your reference or printed material

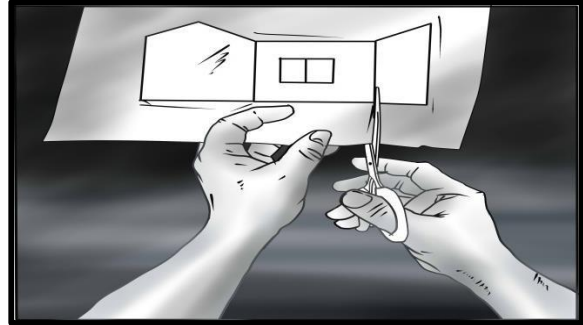


### Procedures:

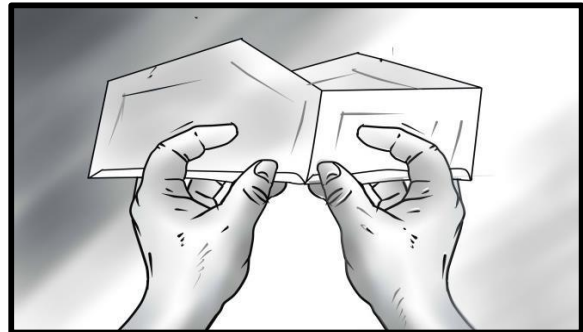
1. Paste your printed materials on the hard board.



2. Cut along its line.



3. Fold the part which needs to be folded.



4. Paste the parts to be connected

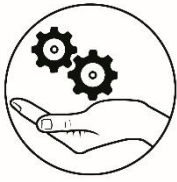


5. Add decorative design to your paper house.



## RUBRICS

	<b>10 POINTS</b>	<b>8 POINTS</b>	<b>6 POINTS</b>	<b>4 POINTS</b>
Creativity/ Elements of Arts & Principles of Design	Artworks contain an original design. Designs should not be copied from other learning resources. Effective use of the Elements and Principles of art were observed in all aspects of the design	Most of the artwork elements are unique, but 1 element was copied from the source material. Elements and Principles of art were observed, however, 1 element does not complement to the over-all design and theme	Most of the artwork elements are unique, but 2 elements were copied from the source material. Elements and Principles of art were observed, however, 2 elements does not complement to the over-all design and theme	Some of the artwork elements are unique, but 3 elements were copied from the source material. Elements and Principles of art were observed, however, 3 elements does not complement to the over-all design and theme
Attractiveness/ Craftsmanship	The artwork exhibited attractiveness and craftsmanship with the following characteristics: a. neatness b. accuracy of the execution of the elements and principles of art c. accuracy of the weaving techniques d. the design obtained high level of difficulty and complexity	The artwork exhibited attractiveness and craftsmanship, however, only 3 characteristics were met.	The artwork exhibited attractiveness and craftsmanship, however, only 2 characteristics were met	The artwork exhibited attractiveness and craftsmanship, however, only 1 characteristic was met
Timeliness	The artwork was submitted on the set schedule	The artwork was submitted one day beyond the set schedule	The artwork was submitted two days beyond the set schedule	The artwork was submitted three days beyond the set schedule



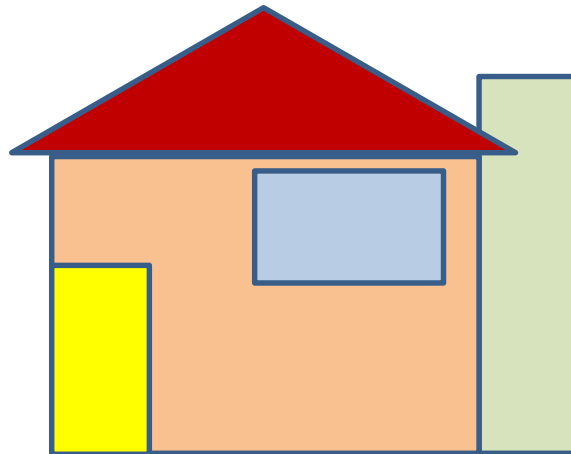
## ***Additional Activities***

You did a great job! This means that you can now move on to the next module. because you have performed excellently.

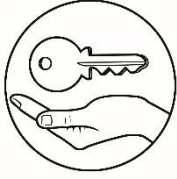
This time, try enrich your learning through this another fun-filled activity. This for sure is just an easy task for you!

### **Activity 1: HOUSE OF THOUGHT!**

Directions: Using the diagram below, accomplish the given activity by writing the 5 importance of the elements or principles of the featured architectures in Luzon. Write its importance in the given parts of the diagram. Then, respond to the following questions below. Do this activity on your activity notebook.



1. How did you come up with the importance of the elements in all the featured architectures in Luzon?
2. Why do you think these elements/ principles are important? Explain.
3. How these elements contribute to the physical appearance of the featured architectures? Why do you say so?



## ***Answer Key***

### **What I Know / Assessment**

1. Calle Crisologo
2. San Andres Apostolic Parish Church
3. Ivatans' Houses
4. Spanish Gate
5. Tumauni Church
6. F
7. H
8. A
9. G
10. C
11. D
12. B
13. E
14. J
15. I

## ***References***

Lourdes R. Siobal et.al, “Arts and Crafts of Luzon (Highlands and Lowlands)” in Music and Artrs Learner’s Material-Grade 7, (Department of Education ,2017),146,147,152,153

Galende, Pedro. Philippine Church Façades (1st ed.) . Manila, Philippines: San Agustin Museum (2007). p. 172.

Gaspar, Roger. "Flowers in Brick: The Tumaui Church in Isabela"PHILIPPINE COLONIAL CHURCH ARCHITECTURE (Philippine Real Estate Magazine, 1996). Accessed February 27,2020.  
<https://web.archive.org/web/20090801045947/http://www2.hawaii.edu/~gaspar/tumaui.html>

Empeno, Henry. "Subic's Spanish Gate declared a historical landmark". BusinessMirror December 2, 2013. Accessed February 25, 2020.  
[https://en.wikipedia.org/wiki/Subic\\_Spanish\\_gate](https://en.wikipedia.org/wiki/Subic_Spanish_gate)

**For inquiries or feedback, please write or call:**

Department of Education - Bureau of Learning Resources (DepEd-BLR)

Ground Floor, Bonifacio Bldg., DepEd Complex  
Meralco Avenue, Pasig City, Philippines 1600

Telefax: (632) 8634-1072; 8634-1054; 8631-4985

Email Address: [blr.lrqad@deped.gov.ph](mailto:blr.lrqad@deped.gov.ph) \* [blr.lrpd@deped.gov.ph](mailto:blr.lrpd@deped.gov.ph)