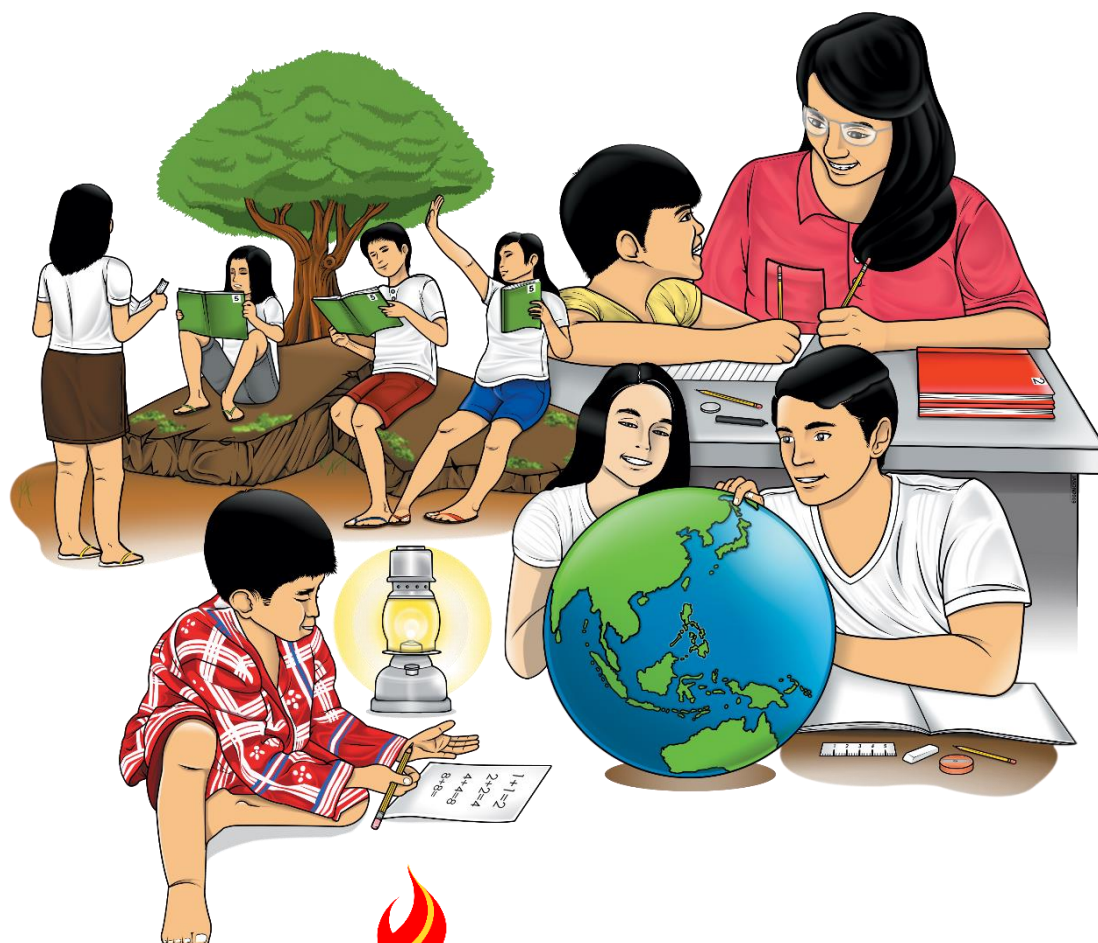


Arts

Quarter 1 – Module 8: Creation of Arts and Crafts of Luzon (Highlands and Lowlands) Sculpture



Arts – Grade 7

Alternative Delivery Mode

Quarter 1 – Module 8: Creation of Arts and Crafts of Luzon (Highlands and Lowlands)

Sculpture

First Edition, 2020

Republic Act 8293, section 176 states that: No copyright shall subsist in any work of the Government of the Philippines. However, prior approval of the government agency or office wherein the work is created shall be necessary for exploitation of such work for profit. Such agency or office may, among other things, impose as a condition the payment of royalties.

Borrowed materials (i.e., songs, stories, poems, pictures, photos, brand names, trademarks, etc.) included in this module are owned by their respective copyright holders. Every effort has been exerted to locate and seek permission to use these materials from their respective copyright owners. The publisher and authors do not represent nor claim ownership over them.

Published by the Department of Education

Secretary: Leonor Magtolis Briones

Undersecretary: Diosdado M. San Antonio

Development Team of the Module

| | |
|--------------------------|---|
| Author: | Louie J. Cortez |
| Content Editor: | Emmanuel C. Alveyra |
| Language Editors: | Cherrie Rose L. Desaliza, Gladys F. Cantos |
| Reviewer: | Emmanuel C. Alveyra |
| Illustrator: | Reymark L. Miraples, Louie J. Cortez, Richard Amores, Pablo M. Nizal, Jr., Jan Christian D. Cabarrubias |
| Layout Artist: | Reymark L. Miraples, Jhunness Bhaby A. Villalobos |
| Management Team: | Benjamin D. Paragas, Mariflor B. Musa, Melbert S. Broqueza, Danilo C. Padilla, Annabelle M. Marmol, Florina L. Madrid, Norman F. Magsino, Dennis A. Bermoy, Emmanuel C. Alveyra |

Printed in the Philippines by _____

Department of Education – MIMAROPA Region

Office Address: Meralco Avenue corner St. Paul Road, Pasig City

Telephone Number: (02) 6314070

E-mail Address: mimaropa.region@deped.gov.ph

Arts

**Quarter 1 – Module 8:
Creation of Arts and Crafts of Luzon
(Highlands and Lowlands)
Sculpture**

Introductory Message

For the facilitator:

The 8th module in Art 7 (Quarter 1) contains the detailed discussion about the sculptures from Luzon. Said discussion focuses on the elements and principles of arts which can be observed on the designs. The facilitator needs to strengthen the learners' understanding about the elements and principles of arts. Analysis of those will help the learners to fully understand its value and appreciate the aesthetic qualities and uniqueness of the design present in the said artwork. This module used the Blooms' Taxonomy Instructional Design which integrates the Bloom's Taxonomy Model of Learning in every part of the module. Performance task is included in the last part of the module to enhance the creativity of learners. This module will guide learners on how to create a sculpture which incorporates the elements and principles of arts. Please guide the learners in the different activities especially on the art activity that they have to accomplish. Remind the learners to use separate sheets in answering the pre-test, self-check exercises, and post-test.

For the learner:

The 8th module in Arts 7 (Quarter 1) will guide you to analyze the elements and principles of arts that can be observed in sculptures from Luzon. By looking into the designs, you could be able to identify the sculptures and the place where it originated. You have to recognize also the materials and techniques used that made those artworks unique. This module will guide you to create a sculpture which incorporates the elements and principles of arts. Are you excited to create your own artwork? Try to accomplish all the challenging task. to accomplish all the challenging task.

This module has the following parts and corresponding icons:



What I Need to Know

This will give you an idea of the skills or competencies you are expected to learn in the module.



What I Know

This part includes an activity that aims to check what you already know about the lesson to take. If you get all the answers correct (100%), you may decide to skip this module.



What's In

This is a brief drill or review to help you link the current lesson with the previous one.



What's New

In this portion, the new lesson will be introduced to you in various ways such as a story, a song, a poem, a problem opener, an activity or a situation.



What is It

This section provides a brief discussion of the lesson. This aims to help you discover and understand new concepts and skills.



What's More

This comprises activities for independent practice to solidify your understanding and skills of the topic. You may check the answers to the exercises using the Answer Key at the end of the module.



What I Have Learned

This includes questions or blank sentence/paragraph to be filled in to process what you learned from the lesson.



What I Can Do

This section provides an activity which will help you transfer your new knowledge or skill into real life situations or concerns.



Assessment

This is a task which aims to evaluate your level of mastery in achieving the learning competency.



Additional Activities

In this portion, another activity will be given to you to enrich your knowledge or skill of the lesson learned. This also tends retention of learned concepts.



Answer Key

This contains answers to all activities in the module.

At the end of this module you will also find:

References

This is a list of all sources used in developing this module.

The following are some reminders in using this module:

1. Use the module with care. Do not put unnecessary mark/s on any part of the module. Use a separate sheet of paper in answering the exercises.
2. Don't forget to answer *What I Know* before moving on to the other activities included in the module.
3. Read the instruction carefully before doing each task.
4. Observe honesty and integrity in doing the tasks and checking your answers.
5. Finish the task at hand before proceeding to the next.
6. Return this module to your teacher/facilitator once you are through with it.

If you encounter any difficulty in answering the tasks in this module, do not hesitate to consult your teacher or facilitator. Always bear in mind that you are not alone.

We hope that through this material, you will experience meaningful learning and gain deep understanding of the relevant competencies. You can do it!

Lesson

1

Creation of Arts and Crafts of Luzon (Highlands and Lowlands) Sculpture

Learning Competencies

The learner:

1. creates crafts that can be locally assembled with local materials, guided by local traditional techniques (e.g., habi, lilip, etc). (A7PR-Ic-e-1)
2. derives elements from traditions/history of a community for one's artwork (A7PR-If-2)
3. shows the relationship of the development of crafts in specific areas of the country, according to functionality, traditional specialized expertise, and availability of resources (e.g. pottery, weaving, jewelry, baskets) (A7PR-If-3)
4. shows the relationship of Luzon (highlands and lowlands) arts and crafts to Philippine culture, traditions, and history (Islamic influences, Spanish heritage, and American legacies in education, business, modernization, and entertainment, as well as in indigenous practices, fiestas, and religious and social practices) (A7PR-Ih-4)



What I Need to Know

Have you ever been into a museum as one of the spectators of famous sculptures of our history? Well, let's make a tour as if you've been invited to see all the historical sculptures hand-crafted by the well-known sculptors who are mostly the natives in the country. Better get ready because you will be able to see how magical their hands are and how well-detailed their products are as well. What are you waiting for, get your cameras now and let's take a click as we roam around our natives' historical sculptures.

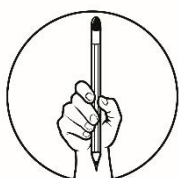
Philippine sculptures are considered home-made because they are made with materials found within the country. They are unique because of the different techniques and processes used by the native sculptors - and they define the native's beliefs and lifestyles. The native's choice of materials depends on its availability and local use. Every handicraft created mirrors the native's culture and traditions - and with the current goals of preservation, was given the spotlight, along with other local art products.

It requires more than the naked eye to witness the beauty of these artworks. Through careful observation, you will understand the its impact on their livelihoods and culture. Together, we shall discover and appreciate the sculptures and other art works of Luzon. This will be a fun and exciting tour. Let our adventure begin.

Learning Objectives

In this module, you will be able to:

1. determine the different materials and techniques used in sculpture in the
2. Highlands and lowlands of Luzon;
3. make or draw sculpture using local materials and techniques;
4. appreciate sculpture works through determining the proper used of elements and principles of art and how it reflects the culture and history of the place.



What I Know

- A. Complete the following statements by supplying the right word/s from the box below. Write your answer on your answer sheet.

| | | | |
|-------------|------------------|-------------------|-------------------|
| Ukit | Assemblage | Planting of seeds | Fertility symbols |
| Hacienderos | Religious Images | | Higantes |
| Bul'ul | Subtractive | Additive | Sculpture |

1. The art of making two- or three-dimensional representative or abstract forms, especially by carving stone or wood or by casting metal or plaster is called _____.
2. _____ sculpting processes involve adding materials to “build up” the sculpture.
3. _____ processes rely on the removal of the material to “reveal” the sculpture.
4. _____ is a carved-wooden human figure with simplified forms and used in rituals that are performed to call the ancestors to protect their rice fields from pestilence and to ask for an abundant harvest.
5. _____ are big papier machè of human figures that represent farmers and fishermen.
6. Paete carvers usually produce wooden _____ and wood panels with decorative floral patterns and florid geometric designs
7. Higantes are the representation of _____.

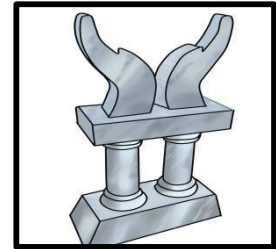
8. During ritual called tunod, which means “_____” bul’ul dipped in the blood of pigs.
9. The big papier machè is considered as _____ sculpture.
10. The local term for carving is “_____”.

B. Analyze the following pictures. Write **S** if the process used in the picture is Subtractive and write **A** if it is Additive.

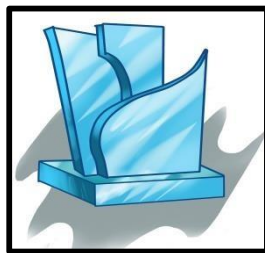
_____ 11.



_____ 12.



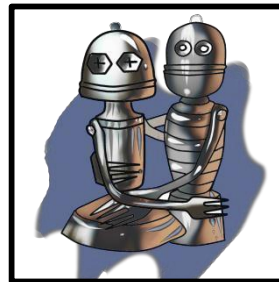
_____ 13.



_____ 14.



_____ 15.



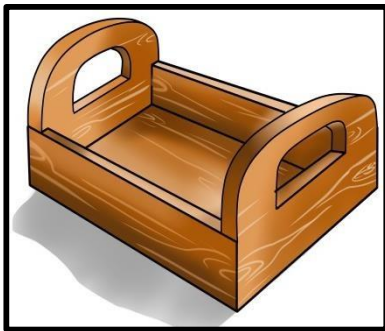


What's New

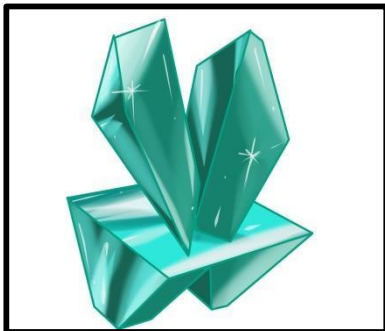
AMAZING GUESS-race!

This activity will measure your speed and practical knowledge as you are expected to think and write as fast as you can.

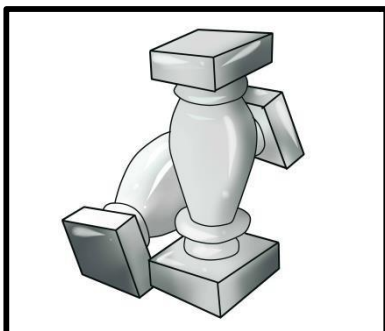
From the pictures below, think of where they are made from and try to list down on your notebook all the materials used to finish the product. Upon listing down, make sure that you've indicated the main tools to be able to come up with the product shown. You shall start from the first picture down to the last one. Do it the fastest time possible. Are you ready? Remember, don't escape!



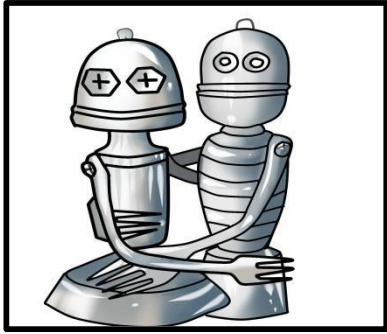
1. _____



2. _____



3. _____



4. _____
- _____
- _____
- _____
- _____



5. _____
- _____
- _____
- _____
- _____

- a. What have you noticed on the activity? How did the materials contribute to the overall appearance of each arts and crafts?
- b. How can we identify the materials to be used to create a particular product?

The previous activity served as a guide for you to determine the materials mostly used in doing arts and crafts. This also showed the main tools specifically to craft a particular product. The next part of this module will give you a closer look on how these materials determined and how the beliefs, cultures, and traditions become contributing factors in crafting a particular sculpture.



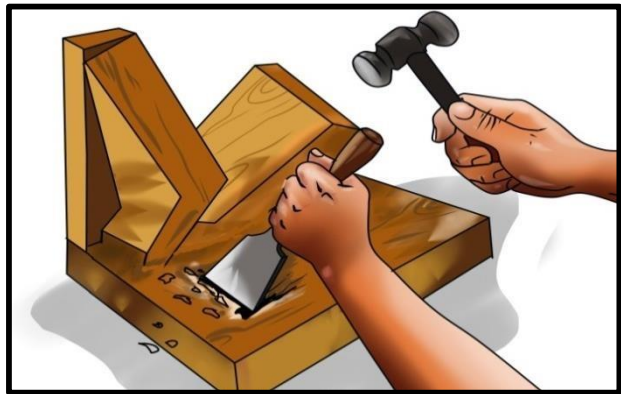
What is It

Sculpture is the art of making two- or three-dimensional representative or abstract forms, especially by carving stone or wood or by casting metal or plaster.

There's a wide variety of medium that can be used in sculpture both additive and subtractive process. Some of these are Polymer Clay, Earth clay, Play Dough, Soap, Plaster of Paris, Wax, Balsa Wood, Paper mache etc. Additive sculpting processes involve adding materials to "build up" the sculpture. Subtractive processes rely on the removal of the material to "reveal" the sculpture.¹



Additive



Subtractive

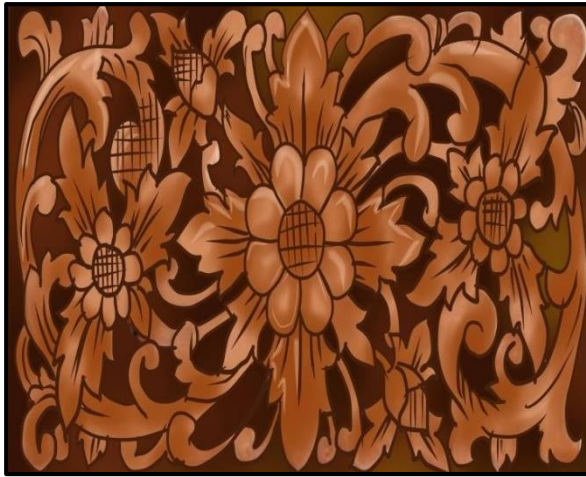


Bul'ul

One example of subtractive process is the sculpture practiced by the Natives of Cordillera".Ifugao has a wooden sculpture called bul'ul that represents the rice granary spirits. It is used in rituals that are performed to call the ancestors to protect their rice fields from pestilence and to ask for an abundant harvest. Bul'ul is a carved-wooden human figure with simplified forms and usually made of narra which signifies wealth, happiness, and well-being to the Ifugao. During ritual called tunod, which means "planting seedlings in the soil", bul'ul dipped in the blood of pigs.²

¹ 1 Kristian G. De la Vega, "Sculpture and Architecture"National training of Trainers -CRITICAL CONTENT IN ARTS on K to10 Enhanced Basic Education Program-Session Guide -Grade 4 & 7, Slide 15

² Lourdes R. Siobal et.al, "Arts and Crafts of Luzon (Highlands and Lowlands)" in Music and Arts Learner's Material-Grade 7, (Department of Education ,2017), 149



Wood panel

Paete, Laguna, considered as the Woodcarving Capital of the Philippines. "Ukit" is the local term for carving. Paete carvers usually produce wooden religious images and wood panels with decorative floral patterns and florid geometric designs. It is also a subtractive process of sculpture.

Higantes of Angono in Rizal Province are big papier machè of human figures that represent farmers and fishermen. According to stories, the original higantes were representation of hacienderos during the Spanish colonial period. The earliest known "higantes" are composed of a father, mother, and a child measuring 7 to 10 feet. These big papier machè is considered as assemblage and additive sculpture.



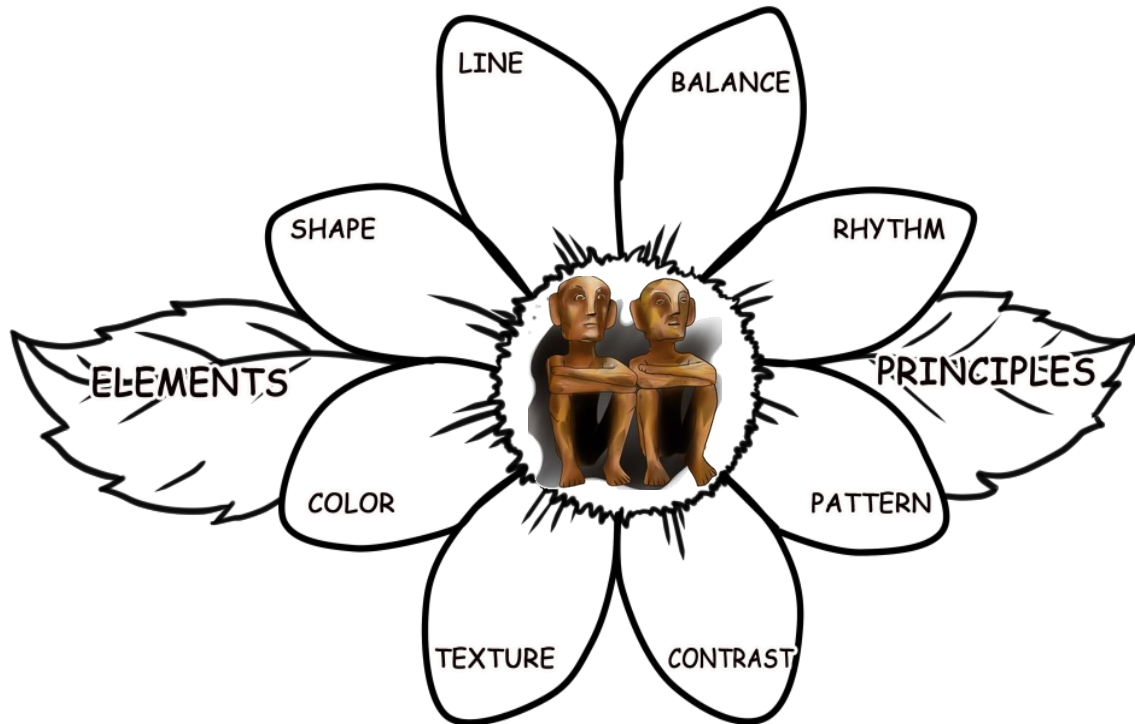
Higantes

Remember Me, Please!

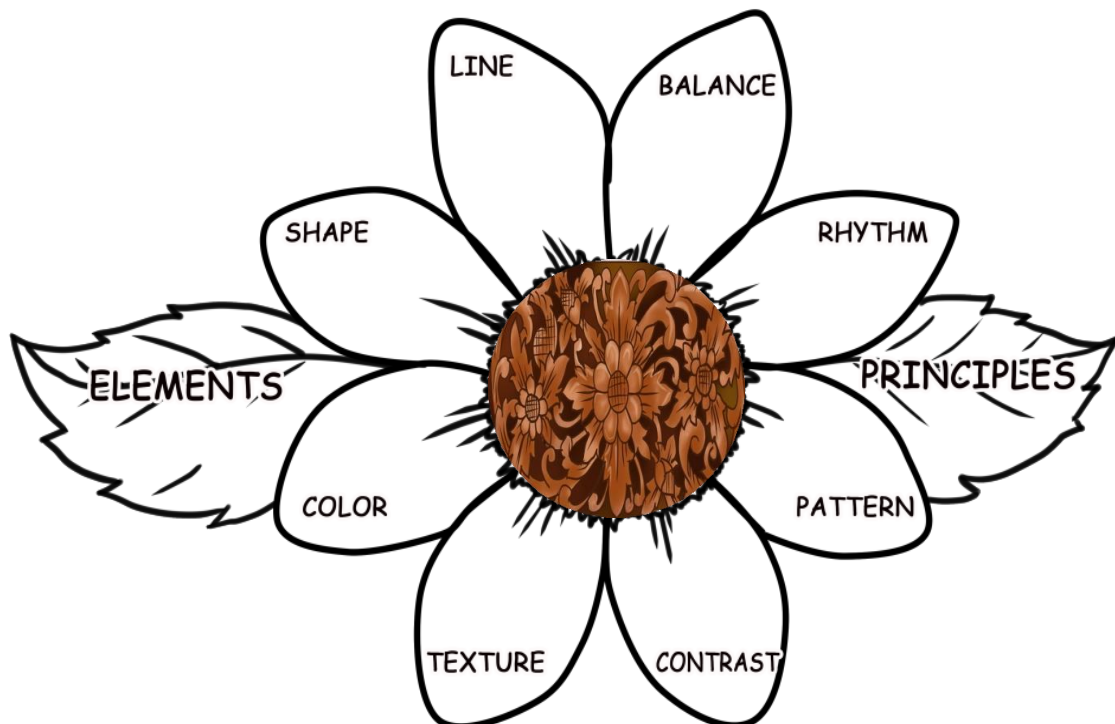
1. Sculpture is the art of making two- or three-dimensional representative or abstract forms, especially by carving stone or wood or by casting metal or plaster.
2. Additive sculpting processes involve adding materials to "build up" the sculpture
3. Subtractive processes rely on the removal of the material to "reveal" the sculpture.
4. Bul'ul is a carved-wooden human figure with simplified forms and used in rituals that are performed to call the ancestors to protect their rice fields from pestilence and to ask for an abundant harvest.
5. . Paete carvers usually produce wooden religious images and wood panels with decorative floral patterns and florid geometric designs
6. Higantes of Angono in Rizal Province are big papier machè of human figures that represent farmers and fishermen.

Describe the following pictures based on their designs. (Elements and Principles of Arts). Explain how the elements and principles of arts reflect the functionality, tradition, expertise, and availability of resources.

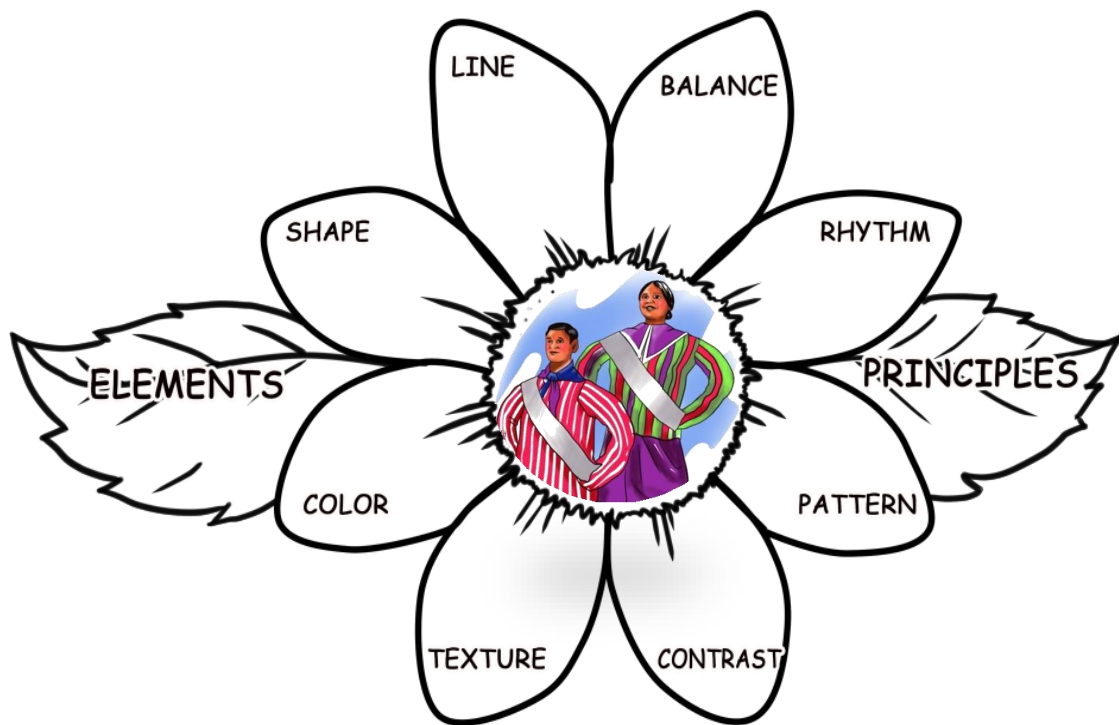
B U L ' U L



WOOD PANEL

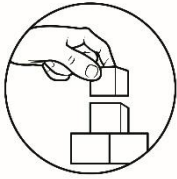


HIGANTES



Congratulations! You've made it. After describing the elements and principles of art used, kindly answer the following questions on another sheet of paper.

1. What could be the similarities and differences of the sculptures based from the elements of art used? Principles of arts used?
2. Based from their culture and history, how did the elements create distinctive designs of sculptures?



What's More

Activity 1

In this activity you will be able to enhance your illustration skills and creative imagination in designing sculptures. First, make a plan of the sculpture you want to make/create. Decide for its height and width as well as the depth. Second, choose what materials you will be used. Draw your design on a separate sheet of paper.

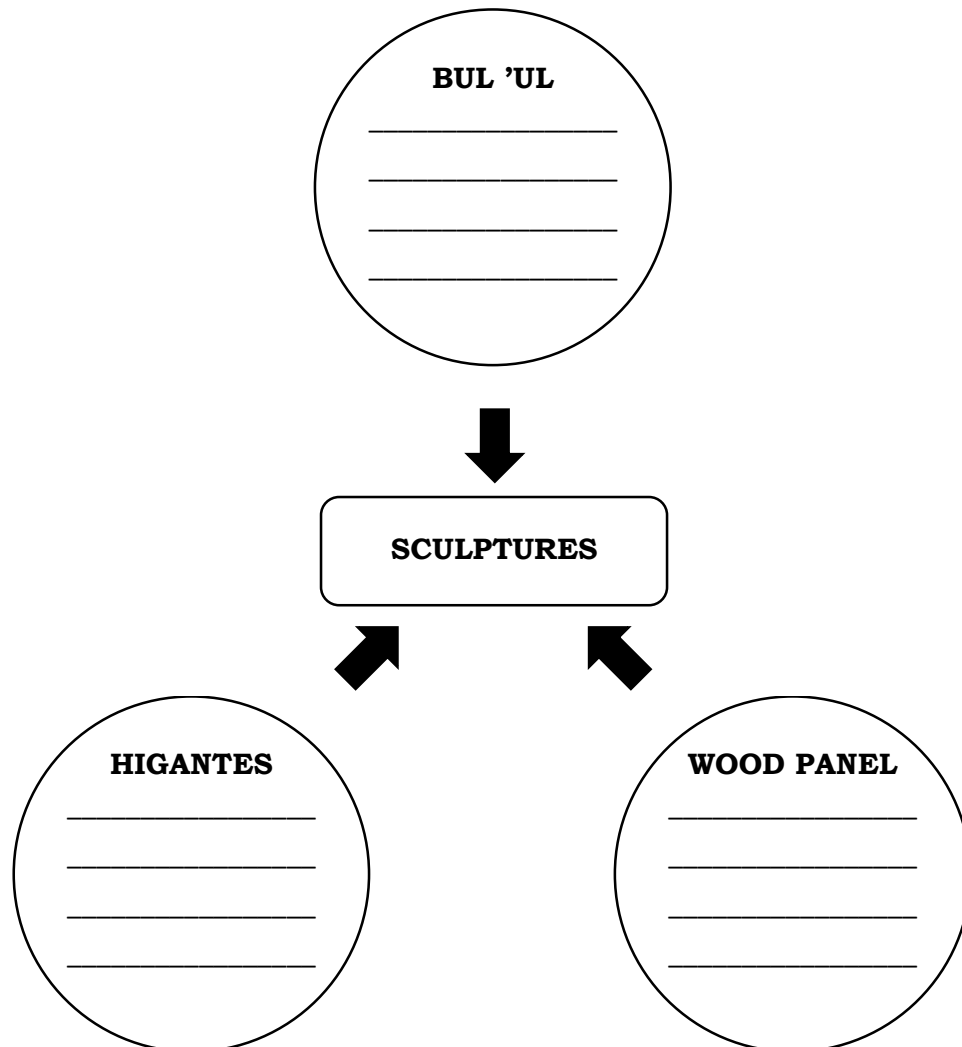
SCUL-PLAN (Sculpture Plan)

A large, empty rectangular box with a thin black border, intended for a student to draw their sculpture plan.

- A. What are the special characteristics of your design that makes it different from the other illustrations? (materials used)
- B. Based on your design, give at least three elements of art used and explain its importance.

Activity 2: Circle Of Three

Directions: Based on the lesson presented in the previous sections of the module, sculptures were characterized by different elements or principles that make them unique and different among other artworks. Using the chart below, discuss how these elements provide aesthetic beauty in the featured sculptures. Afterwards, respond to the following questions below. Do this activity on your notebook.



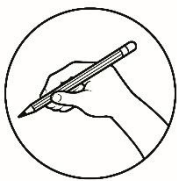
1. How do you think the elements or principles help these sculptures preserve their form and designs?
2. In your own opinion, is it important to know the elements being characterize by these sculptures? How do you say so?

Congratulations! You made it. You have performed very well. It means that you grasped all the important concept from this learning module. Now, it's time for you to reflect on what you have understood and realized upon discovering the essence of sculptures in the featured places in Luzon



What I Have Learned

My Reflections



Assessment

- A. Complete the following statements by supplying the right word/s from the box below. Write your answer on your answer sheet.

| | | | |
|-------------|------------------|-------------------|-------------------|
| Ukit | Assemblage | Planting of seeds | Fertility symbols |
| Hacienderos | Religious Images | Higantes | |
| Bul'ul | Subtractive | Additive | Sculpture |

1. The art of making two- or three-dimensional representative or abstract forms, especially by carving stone or wood or by casting metal or plaster is called _____.
2. _____ sculpting processes involve adding materials to “build up” the sculpture.
3. _____ processes rely on the removal of the material to “reveal” the sculpture.

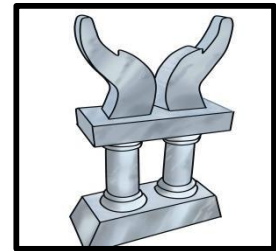
4. _____ is a carved-wooden human figure with simplified forms and used in rituals that are performed to call the ancestors to protect their rice fields from pestilence and to ask for an abundant harvest.
5. _____ are big papier machè of human figures that represent farmers and fishermen.
6. Paete carvers usually produce wooden _____ and wood panels with decorative floral patterns and florid geometric designs
7. Higitantes are the representation of _____.
8. During ritual called tunod, which means “_____” bul’ul dipped in the blood of pigs.
9. The big papier machè is considered as _____ sculpture.
10. The local term for carving is “_____”.

B. Analyze the following pictures. Write **S** if the process used in the picture is Subtractive and write **A** if it is Additive.

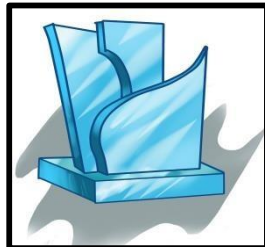
_____ 11.



_____ 12.



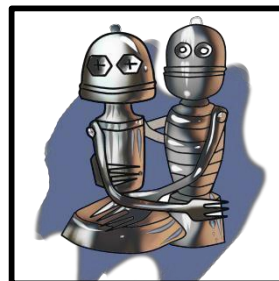
_____ 13.

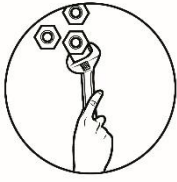


_____ 14.



_____ 15.





What I Can Do

Wood panel is one of the main subjects of the carvers in Paete, Laguna because of its high quality type of woods and its planishing texture. This sculpture is known for its appealing florid geometric designs and decorative floral patterns.

In this activity you will use your creativity, imagination, and appreciation by creating/ constructing your own Soap Panel with your favorite floral design through incorporating the design and forms of the highland and lowland object in your creation. This activity will use a soap which is the main material because of its availability. You may also use clay as the materials to make it more attractive and to add texture for the sculpture.

Take a photo of your artwork and submit it to your facilitator through messenger, e-mail, or other media platforms.

Okay, let's start.

My Soap Floral Panel

Materials:

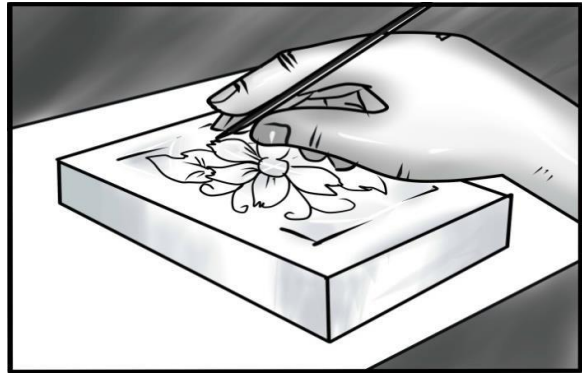
- Pencil
- Bond paper
- Stick/ barbecue stick/ cutter/nail pusher
- Sanding paper
- Clay F. Soap G. Cutter

Procedure:

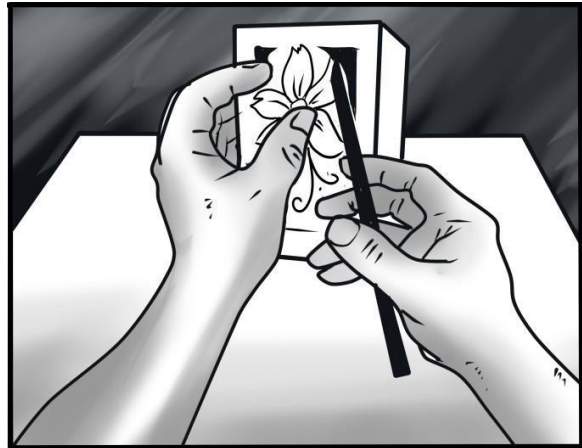
1. Sketch your sculpture on a piece of paper then transfer on to the soap.



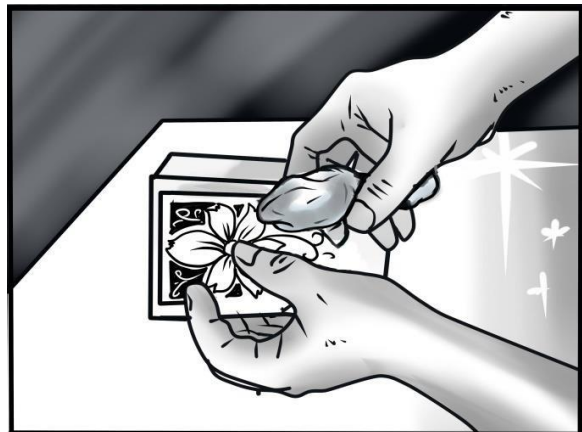
2. Create a base.



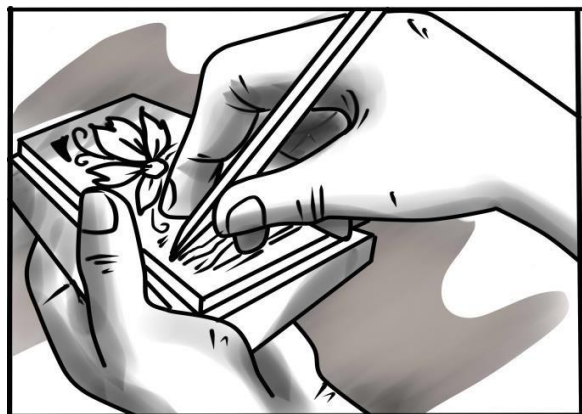
3. Move from large forms to smaller one.



4. Carve in the details (you may use clay for additive purposes)

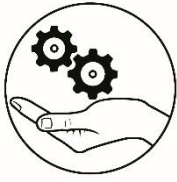


5. Add in textures.



RUBRICS

| | 10 POINTS | 8 POINTS | 6 POINTS | 4 POINTS |
|---|--|---|--|--|
| Creativity/ Elements of Arts & Principles of Design | Artworks contain an original design. Designs should not be copied from other learning resources. Effective use of the Elements and Principles of art were observed in all aspects of the design | Most of the artwork elements are unique, but 1 element was copied from the source material. Elements and Principles of art were observed, however, 1 element does not complement to the over-all design and theme | Most of the artwork elements are unique, but 2 elements were copied from the source material. Elements and Principles of art were observed, however, 2 elements does not complement to the over-all design and theme | Some of the artwork elements are unique, but 3 elements were copied from the source material. Elements and Principles of art were observed, however, 3 elements does not complement to the over-all design and theme |
| Attractiveness/ Craftsmanship | The artwork exhibited attractiveness and craftsmanship with the following characteristics: a. neatness b. accuracy of the execution of the elements and principles of art c. accuracy of the weaving techniques d. the design obtained high level of difficulty and complexity | The artwork exhibited attractiveness and craftsmanship, however, only 3 characteristics were met. | The artwork exhibited attractiveness and craftsmanship, however, only 2 characteristics were met | The artwork exhibited attractiveness and craftsmanship, however, only 1 characteristic was met |
| Timeliness | The artwork was submitted on the set schedule | The artwork was submitted one day beyond the set schedule | The artwork was submitted two days beyond the set schedule | The artwork was submitted three days beyond the set schedule |



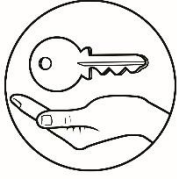
Additional Activities

You have reached the end of the module. You have proved that you can surpass all the challenging activities that this learning module has offered. To enrich your learning about the lesson in this module, try to accomplish the last activity. Use all your understanding so that you can perform well even until the end of this module.

Activity 1: I AM A SEARCHER!

Directions: The influence of sculptures has made our country's culture and tradition richer and relevant even up to this day. In this activity, you are tasked to find any sculpture present in your locality or in the internet and observe its elements. Afterwards, respond to the following questions because this will guide you in identifying what elements are being possessed by the sculpture you have found. Answer the following questions on your activity notebook.

1. What particular sculpture did you find in your locality or in the internet?
2. What are the characteristics of the sculpture you have found/searched?
3. What are the elements do the sculpture possess?
4. How these elements contribute to the total appearance of the sculpture?
5. How does the sculpture you have found in your locality or in the internet differ from the sculptures presented in the lesson? Explain.



Answer Key

What I Know/ Assessment

1. Sculpture
2. Additive
3. Subtractive
4. Bul'ul
5. Higanter
6. Religious images
7. Hacienda
8. Planting of seeds
9. Assemblage/Additive Sculpture
10. Ukil
11. S
12. A
13. A
14. S
15. A

References

Lourdes R. Siobal et.al, “Arts and Crafts of Luzon (Highlands and Lowlands)” in Music and Artrs Learner’s Material-Grade 7, (Department of Education ,2017), p149

Kristian G. De la Vega, “Sculpture and Architecture”National training of Trainers - CRITICAL CONTENT IN ARTS on K to10 Enhanced Basic Education Program-Session Guide –Grade 4 & 7, slide 15

For inquiries or feedback, please write or call:

Department of Education - Bureau of Learning Resources (DepEd-BLR)

Ground Floor, Bonifacio Bldg., DepEd Complex
Meralco Avenue, Pasig City, Philippines 1600

Telefax: (632) 8634-1072; 8634-1054; 8631-4985

Email Address: blr.lrqad@deped.gov.ph * blr.lrpd@deped.gov.ph